



**Goals & Objectives**

- Low maintenance
- Native plant palette providing biodiversity and habitat for pollinators & wildlife
- Drought & salt tolerant
- Four season interest



## No Mow Lawn

Drought tolerant, low-maintenance grass that needs mowing only once or twice a year. Once fully established, No Mow requires very little water, due to a large dense root system.

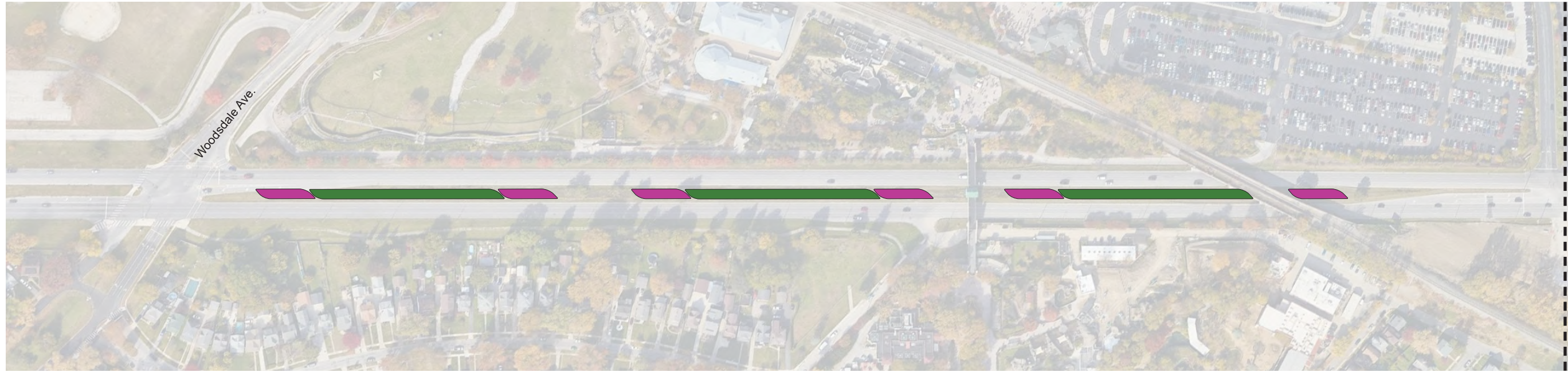
- Grows to form a dense sod
- Thrives in full sun to partial shade
- Does not require fertilization
- Resists most turf grasses diseases
- Reduces lawn maintenance dramatically
- Serves as an ecological alternative to traditional high maintenance lawns





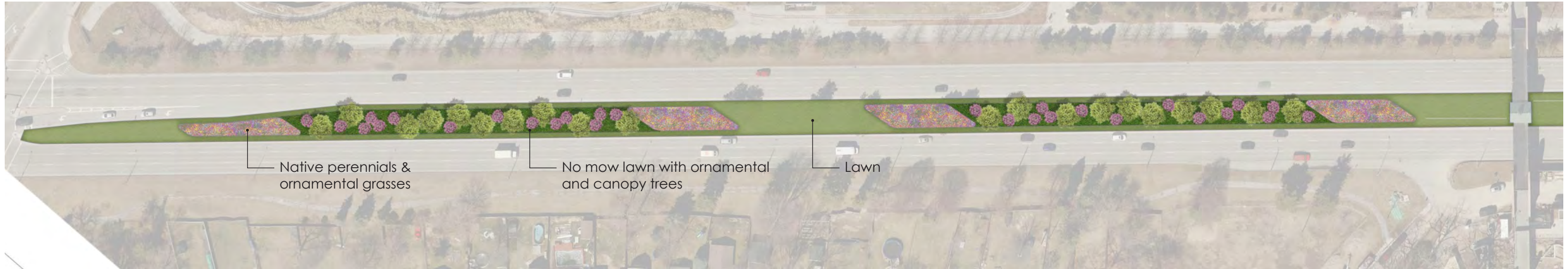
BEST PRACTICE IMAGES

April 2024



**Legend**

- Perennials & Grasses
- Shade & Ornamental Trees with No Mow mix



### Design Objectives Concept A - Rhythm

- Create a sense of rhythm and movement
- Include varying heights, colors, and textures
- Include repetitive curves and angles within the plant beds
- Provide 4 season interest



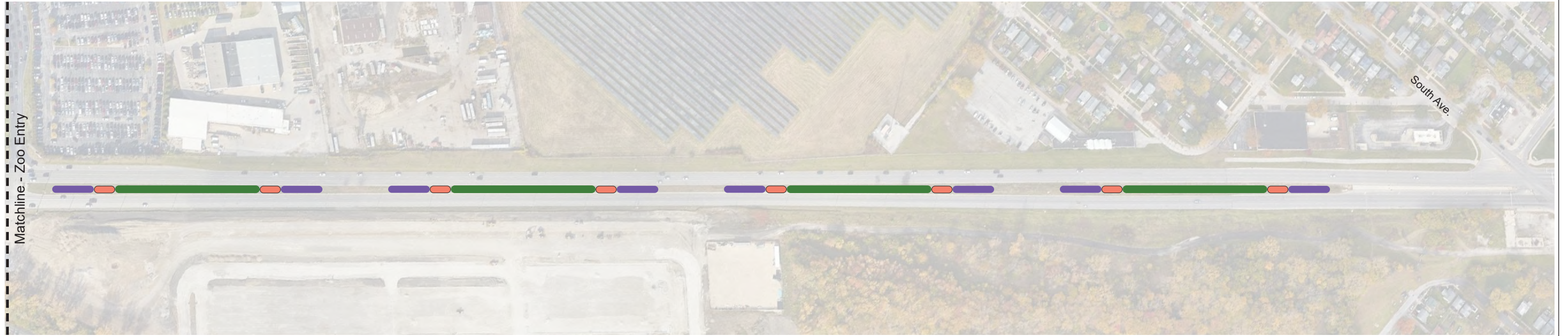
#### **Design Objectives Concept A - Rhythm**

- Create a sense of rhythm and movement
- Include varying heights, colors, and textures
- Include repetitive curves and angles within the plant beds
- Provide 4 season interest



Woodsdale Ave.

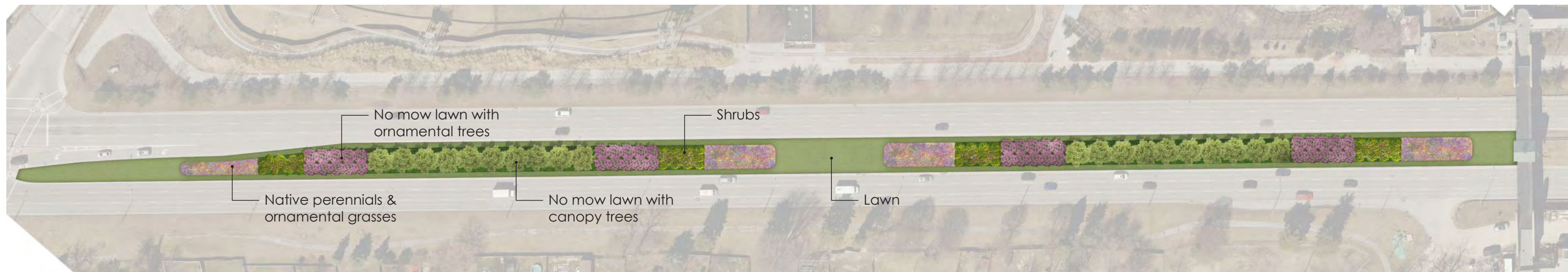
Matchline - Zoo Entry



Matchline - Zoo Entry

South Ave.

- Legend**
- Perennials & Grasses
  - Shrubs
  - Shade & Ornamental Trees with No Mow mix



**Design Objectives Concept B - Structure**

- Create a repetitive pattern focusing on vertical characteristics
- Align plant materials in rows
- Group plant species by size and height
- Provide 4 season interest





### Design Objectives Concept B - Structure

- Create a repetitive pattern focusing on vertical characteristics
- Align plant materials in rows
- Group plant species by size and height
- Provide 4 season interest

# Perennials & Ornamental Grasses

## Spring Blooming Perennials



- Wild Geranium
- Prairie Phlox
- Golden Alexanders

## Summer Blooming Perennials



- Butterfly Milkweed
- Yarrow
- Monarda / Bee Balm

## Late Summer / Fall Blooming Perennials



- Goldenrod
- Black Eyed Susan
- New England Aster

## Ornamental Grasses



- Side Oats Grama
- Little Bluestem
- Prairie Dropseed

\* All species listed are sold on Wild Toledo's website and are native to our region

# Shrubs & Trees

## Shrubs



- Witch Hazel
- Chokeberry
- Spicebush

## Ornamental Trees



- Serviceberry
- Redbud
- American Plum

## Canopy Trees



- Chinkapin Oak
- Swamp White Oak

## Canopy Trees



- Black Gum
- Hackberry

\* All species listed are sold on Wild Toledo's website and are native to our region